

Control Panels

communicating control panel

Matrix Accessories

Additional Accessories

MX-ICON

This keypad can be used with:

MX-6, MX-816, MX-424, MX-832 and MX-832+ control panels

User friendly ICON LCD keypad

- Enables panel programming (if PC not available)
- Ability to access all user options
- 8 Control Panel status icons
- Dedicated Medical, Fire and PA keys
- Adjustable backlight on keys and display



PRODUCT CODES

FP12030

MX-LCD

This keypad can be used with:

MX-424, MX-832 and MX-832+ control panels

Multilanguage LCD keypad

- Enables panel programming (if PC not available)
- Ability to access all user options
- 32 characters LCD display
- Dedicated Medical, Fire and PA keys
- Adjustable backlight on keys and display



MX-LCD I

ENG/SP/FR/IT/POR

FP12600

MX-LCD II

ENG/CZ/PL/HUN/RUS/BUL

FP12610

MX-LCD III

ENG/SP/FIN/SWED/DAN

/NOR

FP12620

MX-LCD (UK ONLY)

FP12640

MX-PROX

The reader can be used with:

MX-424, MX-832 and MX-832+ control panels

- Ability to arm/disarm the Control Panel
- IP65 rated
- 4 Status LEDs
- Available in black or white



FP16100BLK (BLACK)
FP16100W (WHITE)

MX-PTAG

Proximity Tag

- Simulates entry code on a remote keypad (Pack of 10)



FP16140

MX-PCARD

Proximity Card

- Simulates entry code on a remote keypad (Pack of 10)



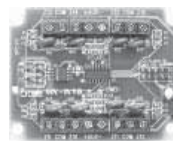
FP16130

MX-IX16

This zone expander can be used with:

MX-816, MX-424, MX-832 and MX-832+ control panels

- 8 Zone plug on zone expansion module
- Power supply and data wiring not required



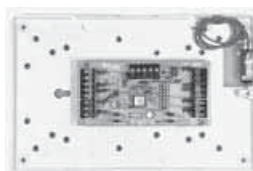
FP12300

MX-RIX16

This input expander can be used with:

MX-424, MX-832 and MX-832+ control panels

- 8 Zone remote expansion module
- inertia zones - analyser integrated
- Max 1-16 pulse count
- Zone sensitivity settings from 4 to 64 ms
- Supplied in polymer housing



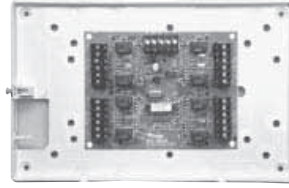
FP12900

MX-ROX8R

This 8 programmable output (PGM) relay expander can be used with:

MX-424, MX-832 and MX-832+ control panels

- Remote 8 way relay output expander
- Supplied in polymer housing

**PRODUCT CODES**

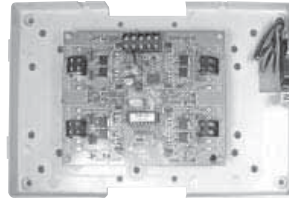
FP12810

MX-ROX8T

This 8 programmable output (PGM) open collector expander can be used with:

MX-424, MX-832 and MX-832+ control panels

- Remote 8 way transistor output expander
- Supplied in polymer housing



FP12830

MX-VOICE

This voice module can be used with:

MX-6, MX-816, MX-424, MX-832 & MX-832+

- 72 sec total duration of messages and up to 8 messages
- On-board buttons (play/record and message select)
- 7 segment display
- Microphone and speaker for record and playback of message



FP14600

RS232 cable link

This cable can be used with:

MX-6, MX-816, MX-424, MX-832 and MX-832+ control panels.

- Enables connection of the panels to a PC for local programming



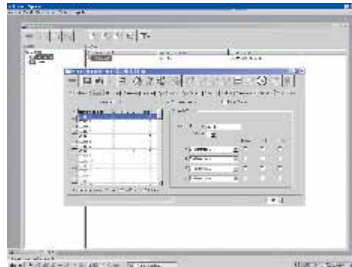
FP11480

MX-UDL

This Up/Downloading software can be used with:

MX-6, MX-816, MX-424, MX-832 and MX-832+ control panels.

- Enables programming of the panels from a PC
- MS Windows based UDL software
- Compatible with most 56k modems
- Local programming capability via RS232 output
- Easy account data management
- Common database used with MX-MON
- Multilingual support



Available from
[www.pyronix.com/
downloads](http://www.pyronix.com/downloads)

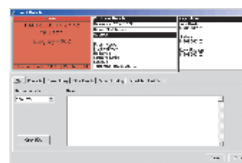
MX-MON

This monitoring software enables all digital events sent by the Matrix (with the Pyronix PC format) to be received using a PC and modem instead of a digital receiver.

However, if required the software is able to work with multi-protocol RC12 and RC112 digital receivers.



FP12010

**MX-INSTCD**

A collection of software and manuals for the Matrix family of control panels including MX-UDL programming software



FP12000

As part of the continued development programme
specifications may change.

Matrix, PCX, Sterling, Vocaliser, KX, Colt, ME, Magnum, Kudos, Octopus,
Eclipse, Veritec, Break Glass 2000, Twin Alert, Belle and Decibell are all
trade marks of Pyronix Ltd