

KOLLECTOR PRO

16-Channel Digital Video Recorder



ViconNet Rev 3.0 improves system interoperability through integration with industry-leading security systems:

- Lenel's OnGuard® Access Security System
- Hirsch's Velocity™ Access Security System
- ObjectVideo's VEW™ Video Analysis and Tracking Systems

Take advantage of these other high-performance features found only in ViconNet's Rev 3.0

- Geographic mapping and control GUI
- 4-output analog matrix option controlled through the ViconNet interface
- System updates over the network
- 8 alarm output relays
- Improved resolution of 720 x 488
- Low bandwidth button
- PTZ joystick control

Vicon's most popular DVR has just become a powerhouse. ViconNet's Rev 3.0 pushes the Kollector Pro to a level of performance never seen in a cost-effective unit. A new geographical map control and an active 4-output analog matrix are the highlights to an extensive list of feature enhancements that improve the Pro's overall use in any system.

System integration has also been a focus of ViconNet's development, and now you can choose an integrated solution that ties your digital video system together with the leaders in access and video analysis. Kollector Pro recorders can now be an integral part of a complete security system with Hirsch and other industry leaders.

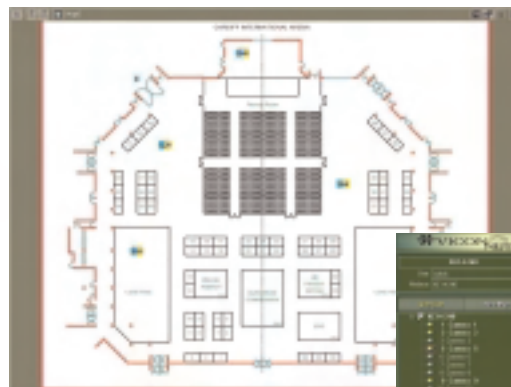
As a DVR, Kollector Pro is unrivaled in its combination of cost-effectiveness and performance. Options include configurations that span the range from 30 fps to 240 fps with storage options up to 1.2 TB internally and 8 TB with an optional external RAID.

World Headquarters
Hauppauge, New York
631-952-CCTV (2288)
800-645-9116

European
Headquarters
Fareham, PO 15 5TX
United Kingdom
+44 (0) 1489 566300

Brussels Office
Zaventem
Belgium
+32 (2) 712 8780

Hong Kong Office
Shatin
New Territories
852-2145-7118



Map Interface

Main ViconNet Interface



Model Descriptions

Model Number	Product Code	Description
KPR30-120/ KPV30-120	8240-40/ 8240-60	KOLLECTOR PRO SERVER; 16-channel networked digital video recorder, 30 fps, 120 GB HD, NTSC/EIA and PAL/CCIR
KPR30-280/ KPV30-280	8241-40/ 8241-60	KOLLECTOR PRO SERVER; 16-channel networked digital video recorder, 30 fps, 280 GB HD, NTSC/EIA and PAL/CCIR
KPR30-440/ KPV30-440	8242-40/ 8242-60	KOLLECTOR PRO SERVER; 16-channel networked digital video recorder, 30 fps, 440 GB HD, NTSC/EIA and PAL/CCIR
KPR60-200/ KPV60-200	8366-40/ 8366-60	KOLLECTOR PRO SERVER; 16-channel networked digital video recorder, 60 fps, 200 GB HD, NTSC/EIA and PAL/CCIR
KPR60-400/ KPV60-400	8367-40/ 8367-60	KOLLECTOR PRO SERVER; 16-channel networked digital video recorder, 60 fps, 400 GB HD, NTSC/EIA and PAL/CCIR
KPR60-600/ KPV60-600	8368-40/ 8368-60	KOLLECTOR PRO SERVER; 16-channel networked digital video recorder, 60 fps, 600 GB HD, NTSC/EIA and PAL/CCIR
KPR120-200/ KPV120-200	8369-80/ 8369-90	KOLLECTOR PRO SERVER; 16-channel networked digital video recorder, 120 fps, 200 GB HD, NTSC/EIA and PAL/CCIR
KPR120-500/ KPV120-500	8370-80/ 8370-90	KOLLECTOR PRO SERVER; 16-channel networked digital video recorder, 120 fps, 500 GB HD, NTSC/EIA and PAL/CCIR
KPR120-900/ KPV120-900	8371-80/ 8371-90	KOLLECTOR PRO SERVER; 16-channel networked digital video recorder, 120 fps, 900 GB HD, NTSC/EIA and PAL/CCIR
KPR120-1200	8488-10	KOLLECTOR PRO SERVER; 16-channel networked digital video recorder, 120 fps, 1.2 TB HD, NTSC/EIA and PAL/CCIR
KPR240-300/ KPV240-300	8450-40/ 8450-60	KOLLECTOR PRO SERVER; 16-channel networked digital video recorder, 240 fps, 300 GB HD, NTSC/EIA and PAL/CCIR
KPR240-600/ KPV240-600	8451-40/ 8451-60	KOLLECTOR PRO SERVER; 16-channel networked digital video recorder, 240 fps, 600 GB HD, NTSC/EIA and PAL/CCIR
KPR240-900/ KPV240-900	8452-40/ 8452-60	KOLLECTOR PRO SERVER; 16-channel networked digital video recorder, 240 fps, 900 GB HD, NTSC/EIA and PAL/CCIR
KPR240-1200	8489-10	KOLLECTOR PRO SERVER; 16-channel networked digital video recorder, 240 fps, 1.2 TB HD, NTSC/EIA and PAL/CCIR

Note: For versions with optional 4-output switcher, add the suffix -16x4 to the model number and add 5 to the product code (i.e. KPR120-500-16x4, 8369-85).

TECHNICAL INFORMATION

<p>Electrical Input Voltage:</p>	<p>120 - 230 VAC +/- 10%, 50/60 Hz, nominal. NOTE: Vicon requires the use of uninterruptible power supply systems (UPS) to prevent voltage fluctuations that can affect operation and cause damage to the equipment. Failure to comply voids the warranty.</p>	<p>Surveillance Operation:</p>	<p>The video display area can show up to 16 simultaneous local cameras providing controls for video quality. Simultaneous live, record and play back video can be displayed with full PTZ control.</p>
<p>Current: Power Consumption:</p>	<p>3 A. KPR30 and KPR60: 400 W nominal. KPR120 and KPR240: 450 W nominal.</p>	<p>Macros:</p>	<p>Automatic operation routines can be defined for locally recorded or live cameras with programmable functions of command duration, recording location, picture quality, refresh mode, recording rate (fps), sensor and relays and alarm activation.</p>
<p>Heat Equivalent:</p>	<p>KPR30 and KPR60: 22.75 btu/min (5.7 kg-cal/min). KPR120 and KPR240: 25.6 btu/min (6.4 kg-cal/min).</p>	<p>Authorization:</p>	<p>Administrator and Guest group rights can be setup to perform specific system functions.</p>
<p>System:</p>	<p>CPU: Intel® Celeron® 1.8 GHz, minimum, for 30 and 60 fps recorders. Intel Pentium IV 2.66 GHz minimum for 120 and 240 fps recorder.RAM: 512 MB. HDD: 120 - 1200 GB. (Based or model. See Table 1.) LAN Card: Intel 100/1000 Mbps, onboard.</p>	<p>Alarms:</p>	<p>Alarms can be setup to activate using macros or triggered by sensors. Alarms can also be triggered on video loss or an "Area of Interest" motion detection screen.</p>
<p>Video Recording Rate:</p>	<p>16 simultaneous channels @ 30, 60, 120 or 240 frames per second, maximum. 30 fps per channel, maximum.</p>	<p>Mechanical Application: Mounting:</p>	<p>Indoor. Standard 19 in. (483 mm) rack mount and stackable, 4U height. Height: 7.0 in. (178 mm). Width: 19.0 in. (483 mm). Depth: 120 fps: 22.0 in. (559 mm). 240 fps: 24.25 in. (616 mm).</p>
<p>Video Recording Resolution:</p>	<p>540 horizontal TV lines max at 720 x 488 pixel pallet (864 x 586, PAL).</p>	<p>Dimensions:</p>	<p>Note: Dimensions exclude connectors and rack mount handles. 45.0 lb (20.5 kg), approximately. Steel case and hardware. Black.</p>
<p>Video Quality:</p>	<p>Selectable using a 4-position bar. Numbers 1, 5, 6, 7 in the bar represent 3 pixel pallet sizes within 2 compression rates.</p>	<p>Weight: Construction: Color:</p>	
<p>Analog Video Matrix: Alarm Output:</p>	<p>4-output, optional. 8 output relays.</p>	<p>Environment Operating Temperature Range: Operating Humidity Range:</p>	<p>32 to 104° F (0 to 40° C). 0 to 95% relative, noncondensing.</p>
<p>Software Operation Configuration:</p>	<p>The Main Window Screen contains a 16-channel local video display area, device tree, controls and toolbars used to operate and setup the system. A configuration menu is used to setup the cameras, macros, devices, authorization, Alarms, Picture Database Utilities, Authentication and Sequence Sessions.</p>		